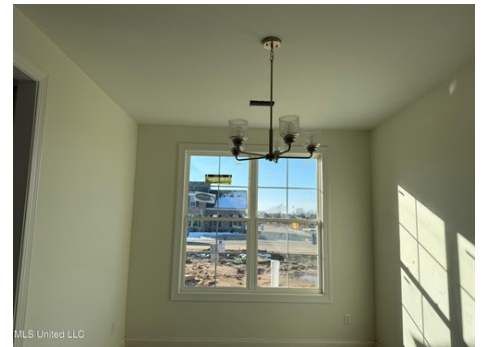




\$ 448,995



5308 Aylesbury Ln, Olive Branch, MS 38654

- » Beds: 5 | Baths: 3 Full
- » MLS #: 4100881
- » Single Family | 2,600 ft<sup>2</sup> | Lot: 19,602 ft<sup>2</sup>
- » More Info: [5308AylesburyLn.IsForSale.com](https://www.5308AylesburyLn.IsForSale.com)



**Jennie Holliday**  
 (901) 334-6961 (mobile)  
 (662) 548-2000 (office)  
[holliday@collins-maury.com](mailto:holliday@collins-maury.com)  
<https://www.hollidaysellshomes.com>



Coldwell Banker Collins-Maury  
 3276 Goodman Rd E  
 Southaven, MS 38672  
 (662) 548-2000

Welcome Home! Step into the Poplar A, open floor plan features 5 bedroom (2 down), 3 full baths, large family room, formal dining, covered patio. Upstairs you'll find two bedrooms, a full bathroom, and a versatile rec room that can double as a fifth bedroom. Schedule your private showing today or visit the model home at 5290 Douglas Dr. open Mon, Thurs, Fri, Sat 1-6pm and Sun 2-5 pm

